

Technical Data Sheet



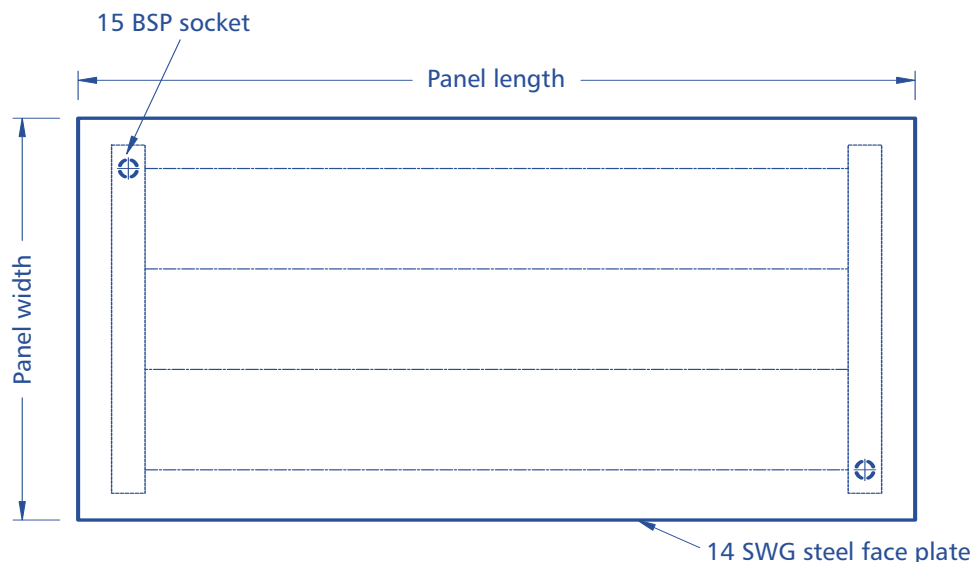
Radiant Heating & Cooling Panels

Solray Ceiling Panel 4GC:S

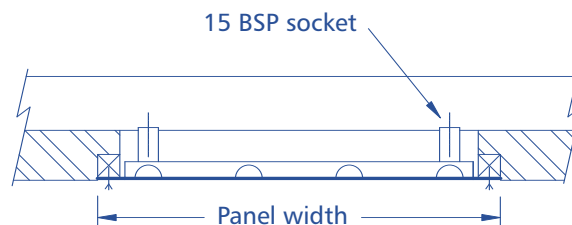
4 Guillotined Edges, Steel Tubes

High Security, Steel Faced

Data Sheet 7-1



Plan



Section

NOTES

Panels finished in a primer for final painting on site by others with the first coat being applied prior to installation, or in a factory applied textured powdercoat to any standard colour.

Panels insulated with 50mm glass fibre class 'o' backed mattress.

Panels to be complete with angle cleats at approximately 300mm centres for fixing with hook bolts.

Connections are 15mm, 20mm or 25mm BSP sockets.

Panels to vent through connections.

All edges guillotined.

Panel viewed from face (i.e. looking up at the ceiling).

Panels tested to 700 kPa at works.

Panel mass is approximately 40 kg/m².

COMYN CHING & CO. (SOLRAY) LTD

SOLRAY WORKS, MANILLA STREET, DOCKLANDS, LONDON E14 8LG

TEL: 020 7987 8787 FAX: 020 7987 9898

WWW.SOLRAY.CO.UK E-MAIL: SALES@SOLRAY.CO.UK