

# Technical Data Sheet



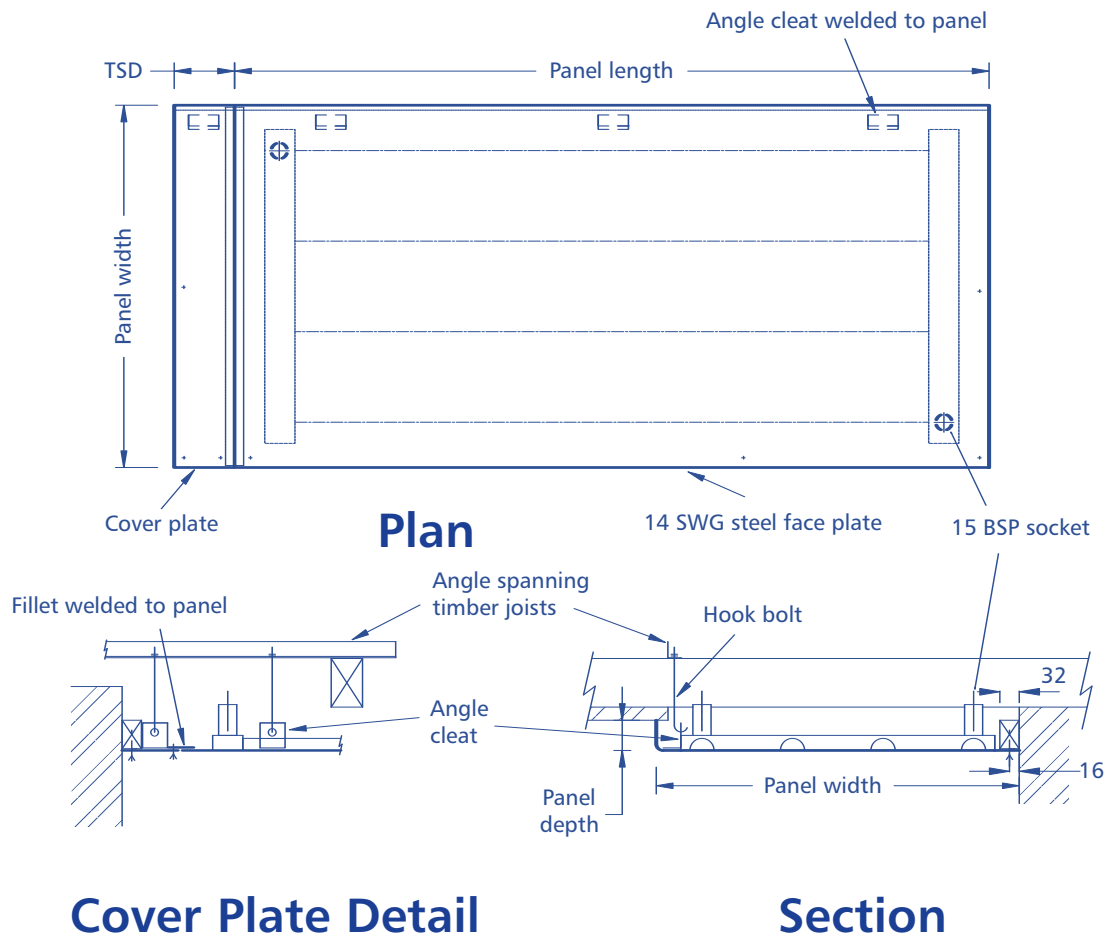
## Solray Ceiling Panel 1RC1C:S

Radiant Heating & Cooling Panels

1 Returned Edge, 1 Cover Plate, Steel Tubes

High Security, Steel Faced

Data Sheet 7-3



### NOTES

Panels finished in a primer for final painting on site by others with the first coat being applied prior to installation, or in a factory applied textured powdercoat to any standard colour.

Timber grounds by others.

Panels insulated with 50mm glass fibre class 'o' backed mattress.

Panels to be complete with angle cleats at approximately 600mm centres for fixing with hook bolts.

Panels drilled at approximately 300mm centres along guillotined edges for fixing with No.7 countersunk wood screws.

Connections are 15mm, 20mm or 25mm BSP sockets. Panels to vent through connections.

Front edge returned; others guillotined.

Cover plate manufactured to site dimensions (TSD) after panel is fixed.

Cover plate fixed to panel with M4 countersunk set screws.

Panel viewed from face (i.e. looking up at the ceiling).

Panels tested to 700 kPa at works.

Panel mass is approximately 40kg/m<sup>2</sup>.

COMYN CHING & CO. (SOLRAY) LTD

SOLRAY WORKS, MANILLA STREET, DOCKLANDS, LONDON E14 8LG

TEL: 020 7987 8787 FAX: 020 7987 9898

WWW.SOLRAY.CO.UK E-MAIL: SALES@SOLRAY.CO.UK